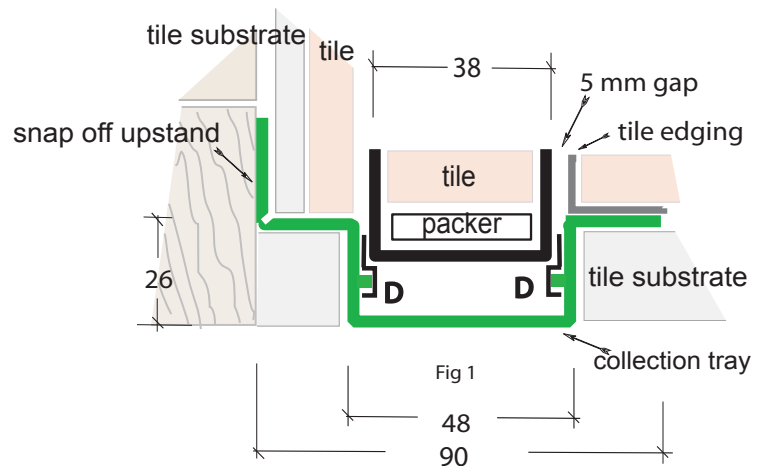
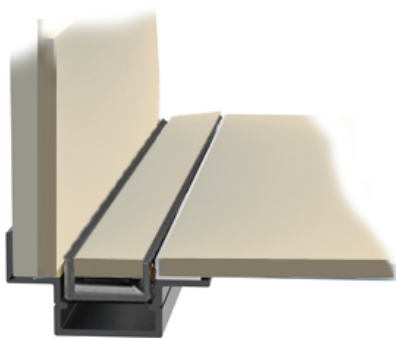
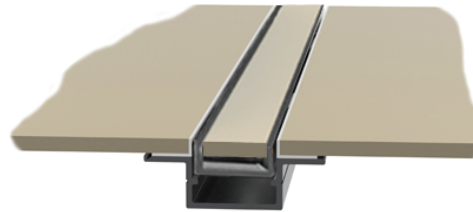


## INSTALLATION GUIDE

- 1 --- For against wall application, position the collection tray to allow for combined thickness of the tile substrate plus tile (see cross section).
- 2 --- For other than against wall installation snap off and remove the vertical upstand from the collection tray.
- 3 --- If needed cut to length the collection tray allowing for end stops and joiners.
- 4 --- Position one or more holes for 40 mm spigots , (fits into 50 mm DWV) and drill, take care to remove burrs from holes & cuts.  
NB. Glue the parts together using a PVC adhesive and test for leaks before installing.
- 5 --- Installation to be in compliance with AS 3500.2.
- 6 --- The top of the collection tray flange must be level with the top of the tile substrate.
- 7 --- Provide fall & waterproofing to the tile substrate and waterproof over the collection tray flange

### KIT PARTS CHECK LIST

collection channel	1
tile tray	1
tile tray end	2
end stop	2
spigot	2
joiner	1
spacer set	5



## TILING

- 1 --- Cut the tile edging to length allowing for a **5 mm gap all around** between the tile tray and the tile edging.
- 2 --- Position the lengths of tile edging on the flange so that they do not overhang the collection tray.
- 3 --- **Position the tile edging to leave equal gaps of 5 mm between the tile tray and the tile edging.**
- 4--- After tiling select appropriate spacers **D** to align the top of the tile tray with the top of the tiles.
- 5--- Separate the spacers evenly along the collection channel to support the tile tray & glue them in position.
- 6..... Cut tile tray to length if necessary allowing for tile tray end caps and glue end caps